



## Biotin Labelled Mouse Anti-Human Programmed Death-Ligand 1 (PD-L1) Monoclonal Antibody Datasheet

**Product Name:** Biotin labeled mAb anti-Human PD-L1

**Clone No.:** 12B4

**Catalogue No.:** MO-L40044TB

**Quantity:**

**Description:** Biotin labeled mouse monoclonal antibody (mAb) to human PD-L1, or biotin labeled mouse mAb to B7H1, or biotin labeled mouse mAb to human CD274.

**Purification:** Protein G affinity purified

**Product Type:** **Tracer. Biotin labeled antibody** in matched antibody pair.

**Target Protein:** Human programmed death-ligand 1 (PD-L1), also known as B7H1 or CD274.

**Immunogen:** Human cell expressed recombinant PDL-1 (Phe19-Arg238) with poly-histidine tag at C-terminus.

**Fusion Myeloma:** Sp2/0-Ag14

**Specificity:** Reactive with human programmed death-ligand 1 (PD-L1).

**Species Reactivity:** Human, others not tested.

**Host / Isotype:** Mouse, IgG1 Kappa

**Formulation:** In 0.01M PBS pH 7.2 containing 0.5% gelatin.

**Storage:** Store at -20°C. Avoid repeated freeze/thaw cycles.

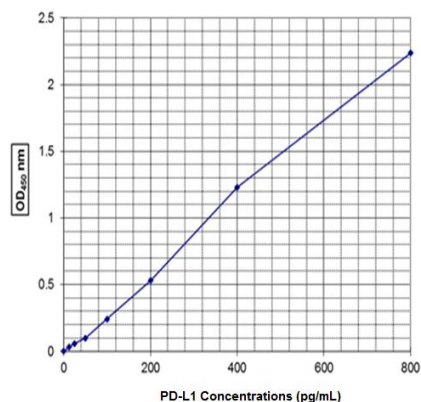
**Research Area:** Immunosuppression. Cancer immunotherapy.

**Background:** PD-L1, a 40KD transmembrane protein, is a ligand of immune checkpoint protein Programmed Death-1 (PD-1). During T-cell receptor signalling, the binding of PD-L1 to PD-1 transmits an inhibitory signal to activated T-cells to decrease their proliferation. PD-L1 is also believed to play a role in the generation and regulation of Treg cells, and in the enhancement of Treg cell function. PD-L1/PD-1 pathway is important to immune suppression, such as self-tolerance,

suppression of immune-rejection during pregnancy and allograft, and immune evasion by cancers. Upregulation of PD-L1 has been found to be associated with many cancer types. For example, increased PD-L1 expression has been shown to be related to tumor aggressiveness and higher mortality in patients with renal cell carcinoma, and related to significantly poorer prognosis and lower intraepithelial CD8+ T-lymphocyte count in patients with ovarian cancer. Antibodies that block the PD-L1 /PD-1 pathway have been extensively studied in clinical trials, and some have been approved as immunotherapy for cancer.

### Application:

**Sandwich ELISA:** Biotin labelled anti-PD-L1 clone 12B4, when used in combination with clone 15G3 (Cat. NO.: MO-L40044N) coated plate, can detect human cell expressed PD-L1 in Sandwich ELISA application.



### References:

If research is published using this product, please inform Anogen in order to cite the reference on this datasheet. Anogen will provide one unit of product in the same category as gratitude.

**This product is for LABORATORY RESEARCH USE and further manufacture ONLY, and cannot be administrated to human and animals for use in diagnostic and therapeutic procedures.**

**Manufactured by ANOGEN - A Division of YES Biotech Laboratories Ltd.**