



ANOGEN - A Division of YES Biotech Laboratories Ltd.

2355 Derry Road East, Unit 23, Mississauga, ON, Canada L5S 1V6 • Tel: (905) 677-9221 • Fax: (905) 677-0023

Mouse Anti-Human S100A7 Monoclonal Antibody Datasheet

Product Name: mAb anti-human S100A7

Clone No.: 9A4

Catalogue No.: MO-T40088A

Quantity: 0.5 mg/vial

Description: Mouse monoclonal antibody to human S100A7 (psoriasin).

Purification: Protein G affinity purified

Product Type: Primary antibody

Target Protein: Human S100A7 (psoriasin)

Immunogen: A short peptide (tdyhkqshgaapcsggs) derived from human S100A7 (psoriasin) was conjugated with KLH for immunization.

Fusion Myeloma: Sp2/0-Ag14

Specificity: This antibody is reactive to S100A7 peptide (tdyhkqshgaapcsggs) and GST tagged recombinant S100A7 protein.

Species Reactivity: Human, others not tested

Host / Isotype: Mouse, IgG1 Kappa

Formulation: Lyophilized from a solution in 0.01M PBS, pH 7.0

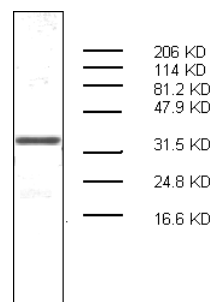
Reconstitution: Double distilled water is recommended to adjust the final concentration to 1.00mg/mL.

Storage: Store at -20°C

Research Area: Oncology, psoriasis

Background: S100A7 is 11 kilo-dalton calcium binding protein with 2 EF motifs. It is also called psoriasin due to its significantly elevated level in the skin lesion of psoriasis. The protein is over-expressed in squamous cell tumors of the skin, lung and breast. S100A7 expression is induced after activation of epidermal growth factor receptor.

Applications: **Western blot:** This antibody is reactive to 36.85KD GST tagged recombinant S100A7 protein.



The GST tagged recombinant S100A7 was loaded at 200ng/lane. The anti-S100A7 clone 9A4 was used at 1µg/ml, and the HRP conjugated goat anti-mouse IgG was used at 1:2,000 dilution.

ELISA: This antibody is reactive to recombinant S100A7 protein.

References: If research is published using this product, please inform Anogen in order to cite the reference on this datasheet. Anogen will provide one unit of product in the same category as gratitude.

This product is for LABORATORY RESEARCH USE and further manufacture ONLY, and cannot be administered to human and animals for use in diagnostic and therapeutic procedures.

Manufactured by ANOGEN - A Division of YES Biotech Laboratories Ltd.